

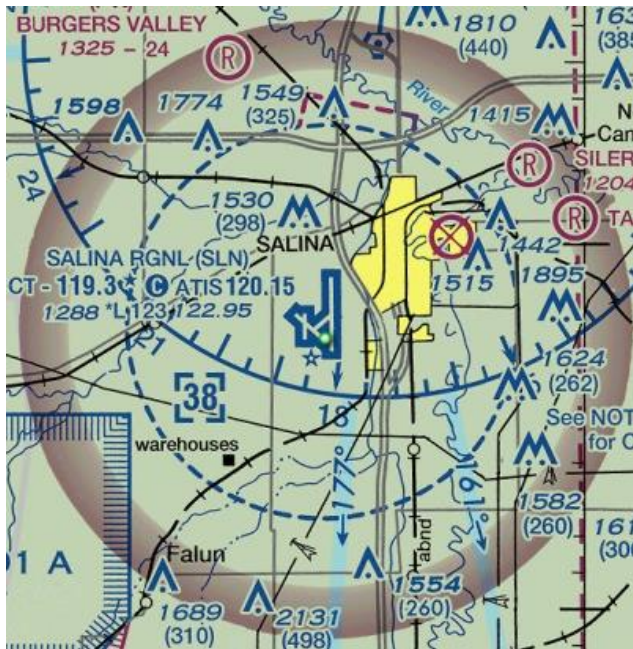
# Navigation – VFR, Part 2

## Sectional Chart Symbols, Information and Airspace

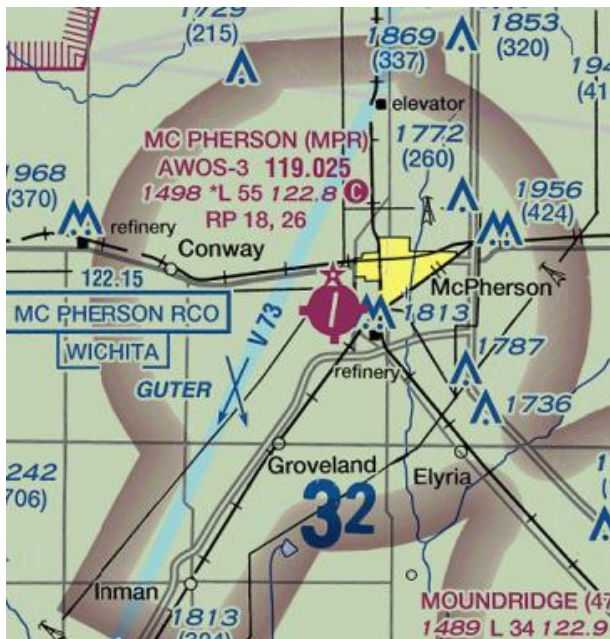
For each of the following airports identify:

- The name and location identifier
- Control tower frequency and if there are limits on availability
- Pertinent radio frequencies for the control tower, CTAF, Unicom and weather
- The altitude of the facility
- The length of the longest runway
- Lighting available and if there are limits on the availability of lighting
- Traffic pattern (turn) direction(s) – left hand or right hand turns are the two options
- Airspace surrounding the facility

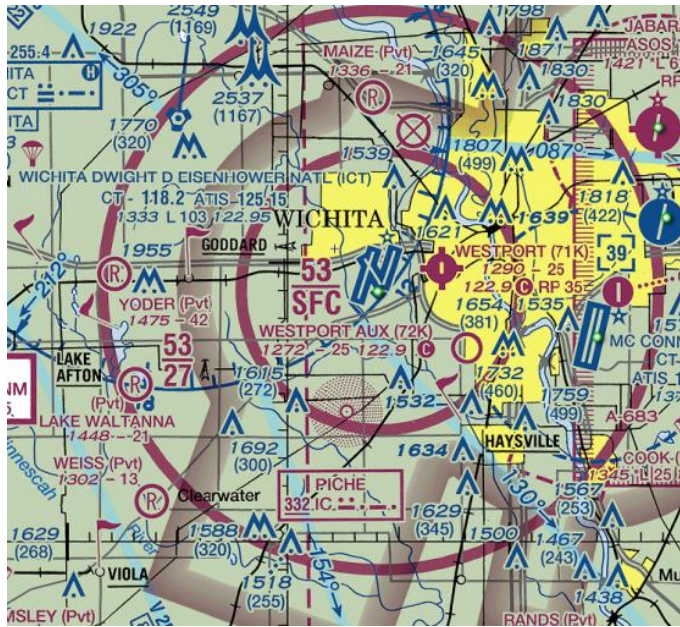
1.



2.



3.



4. What does this symbol (including the arrowed lines at the top) and the numbers next to it represent?



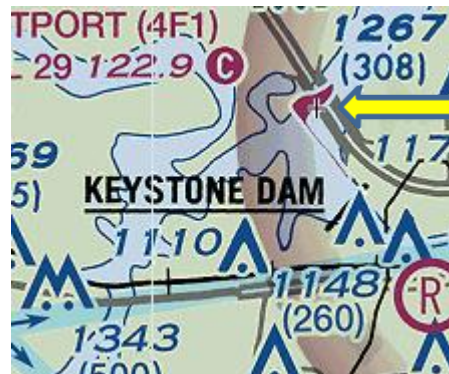
And this one?



And this one?



5. The magenta flag – what is this called (in general) and what specifically is this one identifying?



6. What is VR 1137? IR 117?  
What altitude(s) are involved with each?





