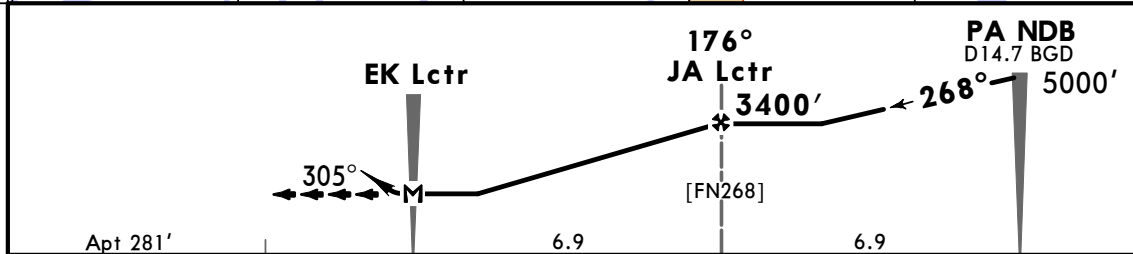
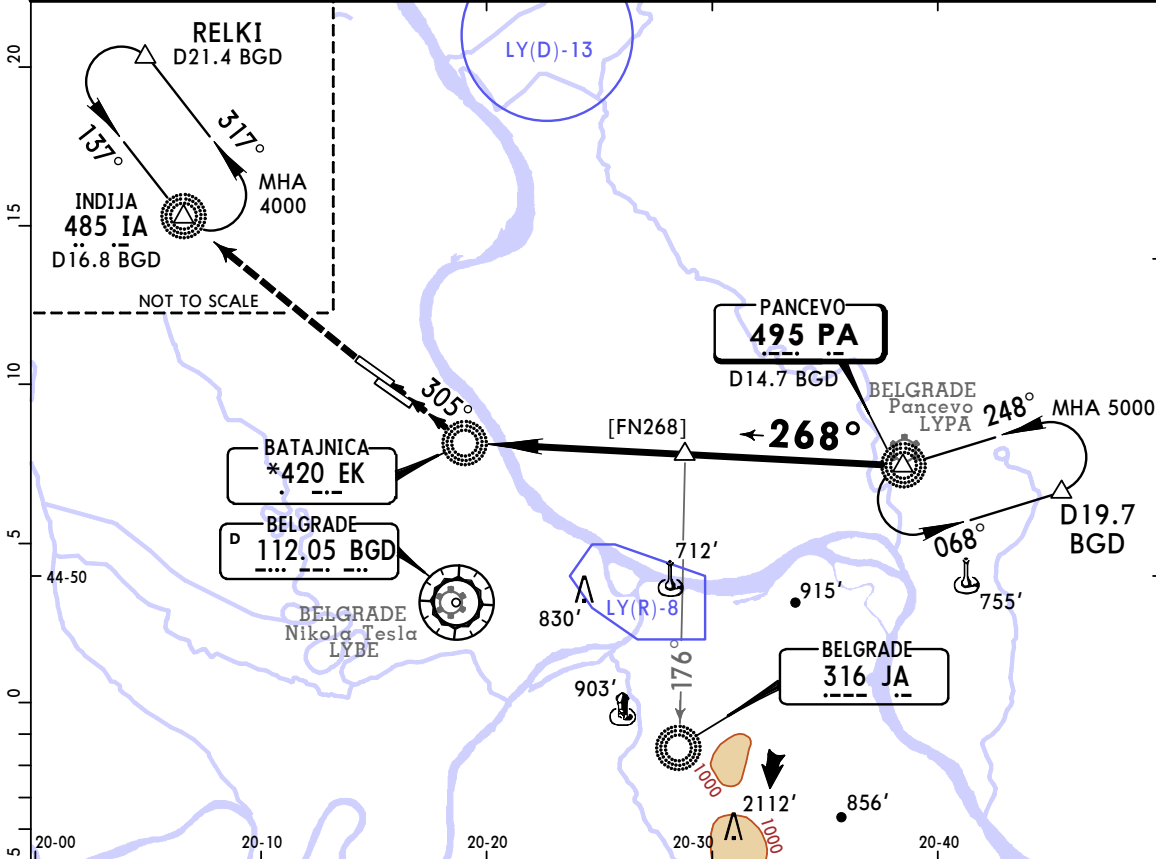
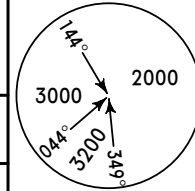


LYBT/BJY
BATAJNICA-PUK-PILOT
M. PAVLOVIC

BELGRADE, SERBIA
Lctr Rwy 30R

BATAJNICA Approach				BATAJNICA Tower	
126.050				118.2	
NDB PA 495	Final Apch Crs 268°	176° JA Lctr 3400' (3119')	MDA(H) Refer to Minimums	Apt Elev 281'	
MISSED APCH: Turn RIGHT climbing to IA NDB to 4000' and hold.					
Alt Set: hPa		Apt Elev: 10 hPa		Trans level: By ATC	
Dual ADF required.				Trans alt: 10000'	
					MSA PA NDB



Gnd speed-Kts	70	90	100	120	140	160	PAPI-L	4000'	IA 485
Descent Angle	3.00°	372	478	531	637	743			
MAP at EK Lctr									

Standard			CIRCLE-TO-LAND TO RWY 30R		
Not authorized Southwest of airport between 129° and 292°					
Max Kts		MDA(H)		VIS	
A	100	690' (409')		1500m	
B	135	790' (509')		1600m	
C	180	890' (609')		2400m	
D	205	990' (709')		3600m	

CHANGES: Bearings. Circling restriction.